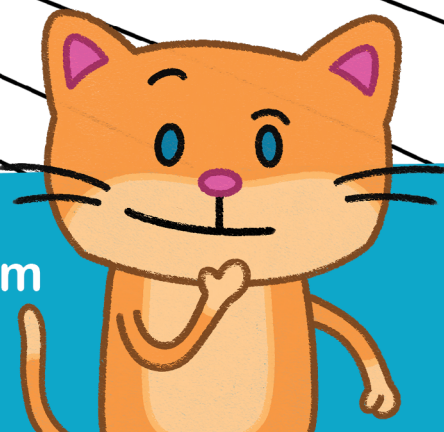
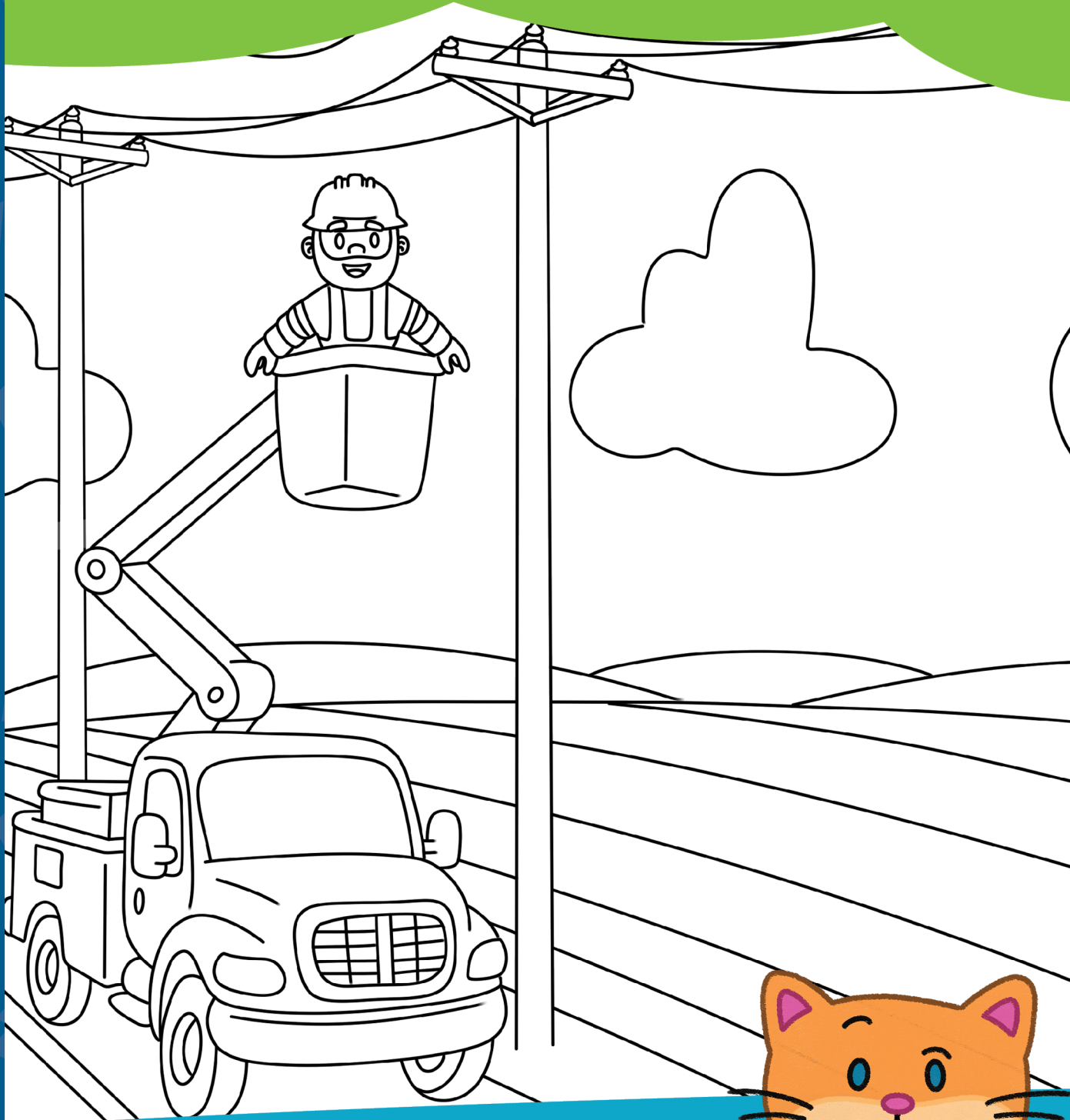


# Color In LINEMAN LARRY

Lineworkers use bucket trucks like the one Larry is using below to safely reach power lines that are high above the ground!



**SAFETY  
TIP**

Always stay far away from  
fallen power lines!

AMPED UP  
CHALLENGE

Ask an adult to visit [CatandDuck.org](http://CatandDuck.org) and read *A Lineworker's Day* with Lineman Larry and Kilowatt Katie to learn what lineworkers do!