



# Cat & Duck

## AMPED UP ADVENTURES

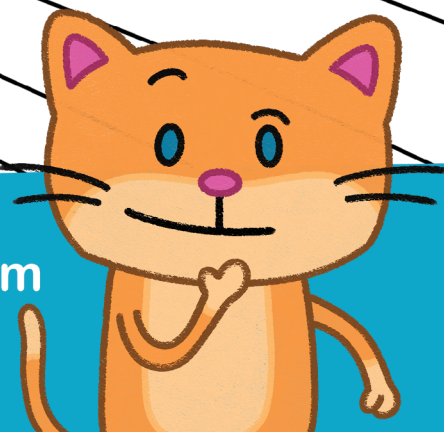
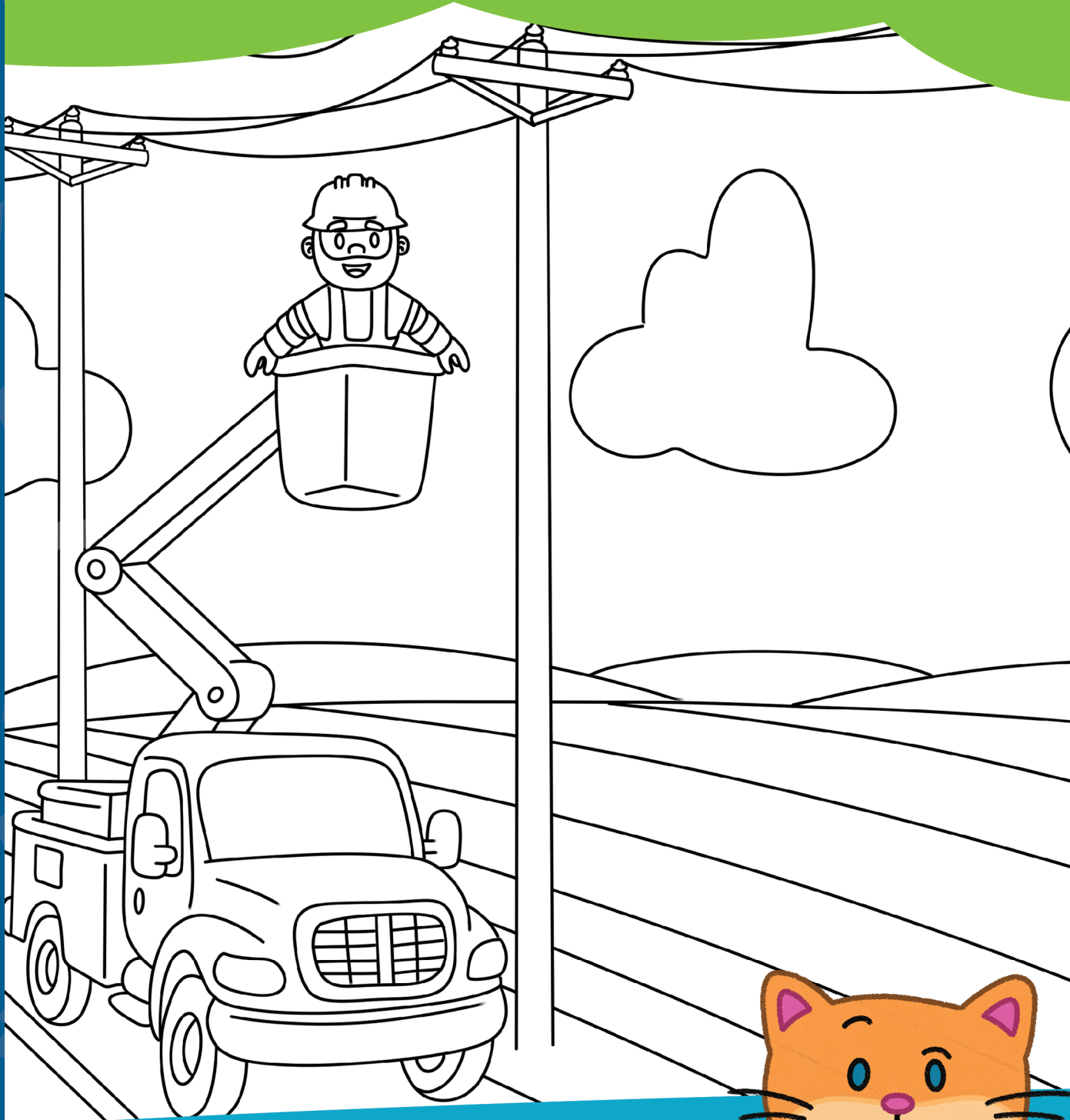
**This activity book belongs to:**

---



# Color In LINEMAN LARRY

Lineworkers use bucket trucks like the one Larry is using below to safely reach power lines that are high above the ground!



**SAFETY  
TIP**

Always stay far away from  
fallen power lines!

AMPED UP  
CHALLENGE

Ask an adult to visit [CatandDuck.org](http://CatandDuck.org) and read *A Lineworker's Day* with Lineman Larry and Kilowatt Katie to learn what lineworkers do!

# WORD SEARCH

L	I	N	E	W	O	R	K	E	R	A	Z	A	
L	C	O	O	P	E	R	A	T	I	V	E	E	O
P	S	E	L	E	X	A	R	I	C	E	N	H	X
B	U	C	K	E	T	T	R	U	C	K	H	A	E
E	F	S	H	T	R	A	E	E	X	A	M	R	K
G	H	B	R	P	T	E	T	F	O	X	O	D	V
P	O	W	E	R	R	L	I	N	E	D	S	H	K
T	R	A	N	S	F	O	R	M	E	R	S	A	B
E	L	E	C	T	R	I	C	S	F	F	A	T	B
E	O	M	R	U	X	E	R	A	A	Y	Y	O	D
S	T	O	Z	M	H	V	H	E	O	D	K	F	R
M	E	M	B	E	R	S	S	T	K	E	A	S	Y
E	N	E	R	G	Y	S	T	O	R	M	N	Y	K

## WORD BANK

The **LINEWORKER** climbed up the pole to fix the **POWER LINE**.

Our **COOPERATIVE** helps bring **ENERGY** to our **MEMBERS**.

The **BUCKET TRUCK** lifted the lineworker high in the air!

The lineworker wore a **HARD HAT** to stay safe while working on **ELECTRIC** lines.

After a **STORM**, lineworkers repair power lines and **TRANSFORMERS** so the power comes back on!

**SAFETY TIP**

Never touch an electrical outlet with wet hands.

Using the letters in the green circles, place them in order (left to right, line by line) to reveal a secret message!

**AMPED UP CHALLENGE**



# DRAW WHAT YOU SEE!



Grab a parent or guardian and head outside on a Power Line Lookout! Look up and find the power lines that bring electricity to homes and communities just like yours! Draw what you see in the space below!



## AMPED UP CHALLENGE

Storm Lookout! Work with an adult to build a storm kit (flashlight, batteries, water, food, first aid). Talk about your plan when storms happen!

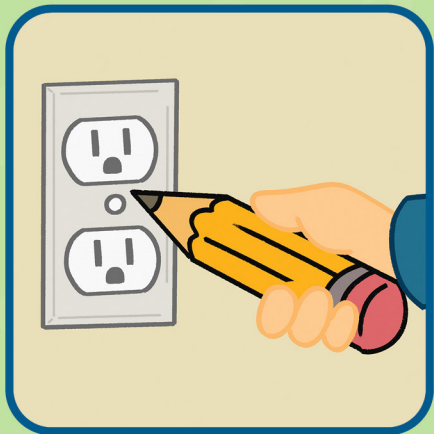
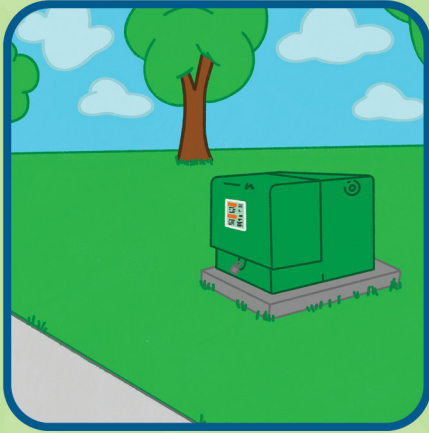


What do you see?

- How many power lines can you count between two poles?
- Do you see a transformer (the round “can” at the top of some poles)?
- Can you spot where the lines connect to a home or building?

# Safe or Not?

Look below at all the pictures. Can you find the ones that are unsafe? Put an X over the ones that are NOT SAFE!

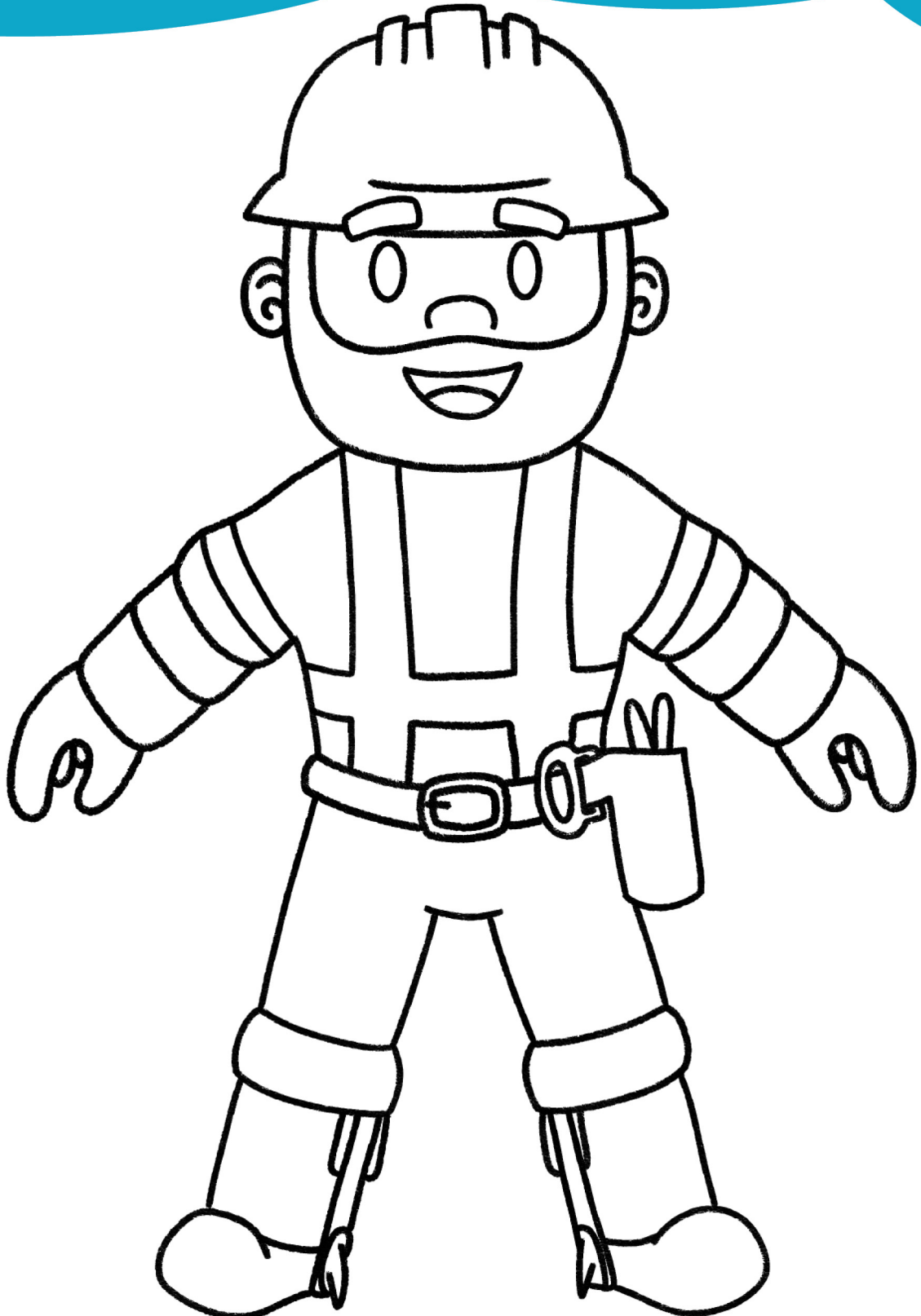


**SAFETY TIP** | Don't climb on utility poles or equipment boxes!

AMPEDED UP | Visit [CatandDuck.org](http://CatandDuck.org) and read Cat & Duck Electric Safety. CHALLENGE | Can you spot and fix unsafe things just like you did here?

# LINEMAN LARRY

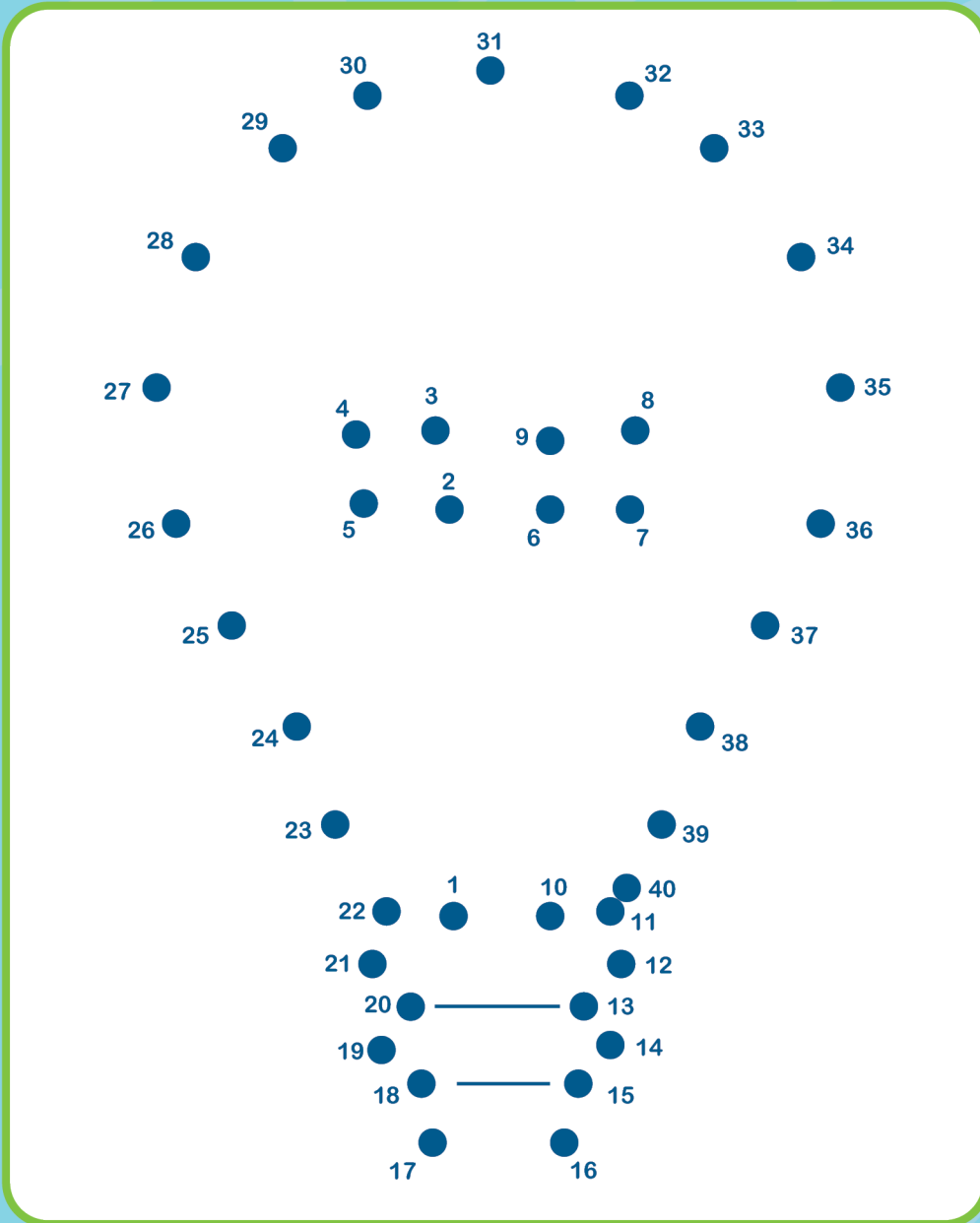
Color your own Lineman Larry then cut him out and take him on adventures! Have an adult send pictures of your adventures with Lineman Larry to your electric cooperative by sending them an email or message on their Facebook page!



AMPED UP  
CHALLENGE

Take Larry on a home tour! Take him around your house and show him your favorite things that use electricity!

# CONNECT THE DOTS



## DID YOU KNOW?

Electricity starts at a place called a power plant, where energy is made. It travels a long way on big power lines that moves it across the land. Then it goes to cooperatives like yours, which brings the electricity safely to homes, schools, and businesses. That's how things like your TV, fridge, and the item in the connect the dots image above get power!



**SAFETY  
TIP**

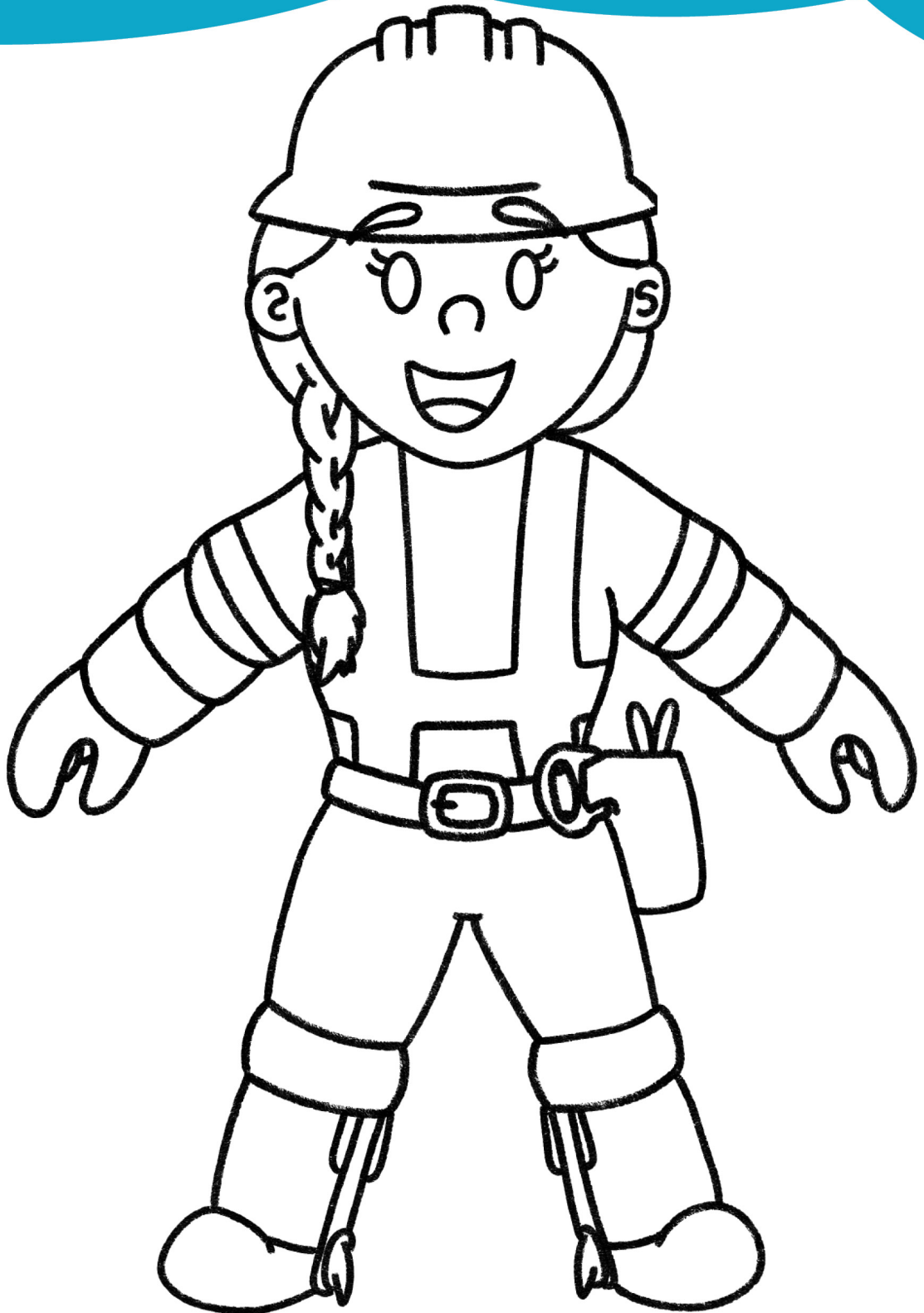
Keep electric cords away from pets. They like to chew!

Did you find out what the image is? How many of those are in your house? How many are currently on, and how many are off? Go check!

**AMPED UP  
CHALLENGE**

# KILOWATT KATIE

Color your own Kilowatt Katie then cut her out and take her on adventures! Have an adult send pictures of your adventures with Kilowatt Katie to your electric cooperative by sending them an email or message on their Facebook page!



AMPED UP  
CHALLENGE

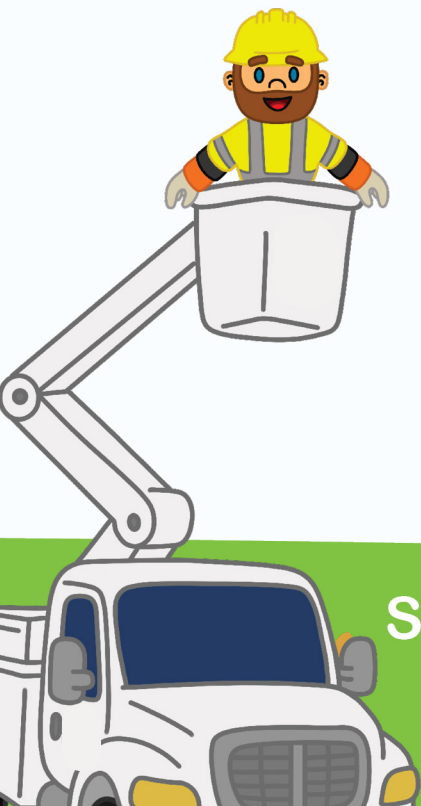
Lineworkers help bring power to people everywhere!  
Visit [CatandDuck.org](http://CatandDuck.org) to read Bringing Power to the World.



# DESIGN YOUR OWN BUCKET TRUCK

In the space below, design your very own bucket truck! Will it have monster truck wheels? A rocket booster? Super speed?

Have fun but don't forget to add the most important part... the bucket! That's what helps lineworkers safely reach power lines high in the air!



## SAFETY TIP

Tell an adult if you see a damaged pole, broken wire, or sparking line!

**AMPED UP** | Every bucket truck needs a team! Create a name for your own  
**CHALLENGE** | electric cooperative and write it next to your drawing.

# ELECTRIC DETECTIVE

Grab a parent or guardian and go on a home adventure! Look around your house and see what you can discover about electricity.

Check off what you find:

- I found \_\_\_\_\_ outlets in one room
- I counted \_\_\_\_\_ things plugged in
- I found a light switch in a room
- The biggest thing that uses electricity in my house is:  
\_\_\_\_\_
- I found something that keeps food cold (like a fridge)
- I found something that makes air move (like a fan)
- I found a night light or something small that uses electricity
- I found something that works when the power is out (like a flashlight)
- I found the electric meter on my house
- I found an outdoor light or outlet
- I found an electric cord in good shape (no cracks or breaks)
- I found something that needed to be unplugged like a charger that wasn't charging anything and unplugged it with an adult's help!

**AMPED UP CHALLENGE** | Did you find things plugged in or lights left on? Turn them off (with an adult) to help save energy!



CLAP  
CLAP  
CLAP

**SAFETY TIP**

Always ask an adult before touching plugs or outlets!

# ZAP SLAP

## Tic-Tac-Toe

### How to Play:

- Both players say: “1 – 2 – 3 – ZAP!” On “ZAP!”, each player points to a card on the page.
- If you point to different cards, you each claim your card by writing your name on it after reading the safety tip or fun fact.
- If you point to the same card, play Rock-Paper-Scissors! The winner claims the card.
- The first player to get three in a row wins! If you tie, play again!!!

**CAT**



**Safety Tip**

Always stay far away from fallen power lines. At least 40 feet!



CAT

**DUCK**



**Safety Tip**

Never climb trees that are touching power lines.



DUCK

**LARRY**



**Safety Tip**

Fly kites and drones only in wide, open spaces away from power lines.




LARRY

**KATIE**



**Safety Tip**

Stay out of electrical substations and never climb the fence.



KATIE

**CAT**



**Safety Tip**

Never throw objects onto power lines!



CAT

**DUCK**



**Safety Tip**

Never touch a fence that has a warning sign for electricity.



DUCK

**LARRY**




**Safety Tip**

Don't climb on utility poles or equipment boxes.




LARRY

**KATIE**



**Safety Tip**

Never jump in the water to help someone who might be getting shocked. Call for help instead!




KATIE

**CAT**



**Safety Tip**

Keep electric cords away from pets. They like to chew!



CAT

Super Challenge Mode! Start at the top left and play Rock-Paper-Scissors for each card. Win cards to get three in a row! Be sure to read the Safety Tip when you win!

AMPED UP  
CHALLENGE



# Cat & Duck

## AMPED UP ADVENTURES

